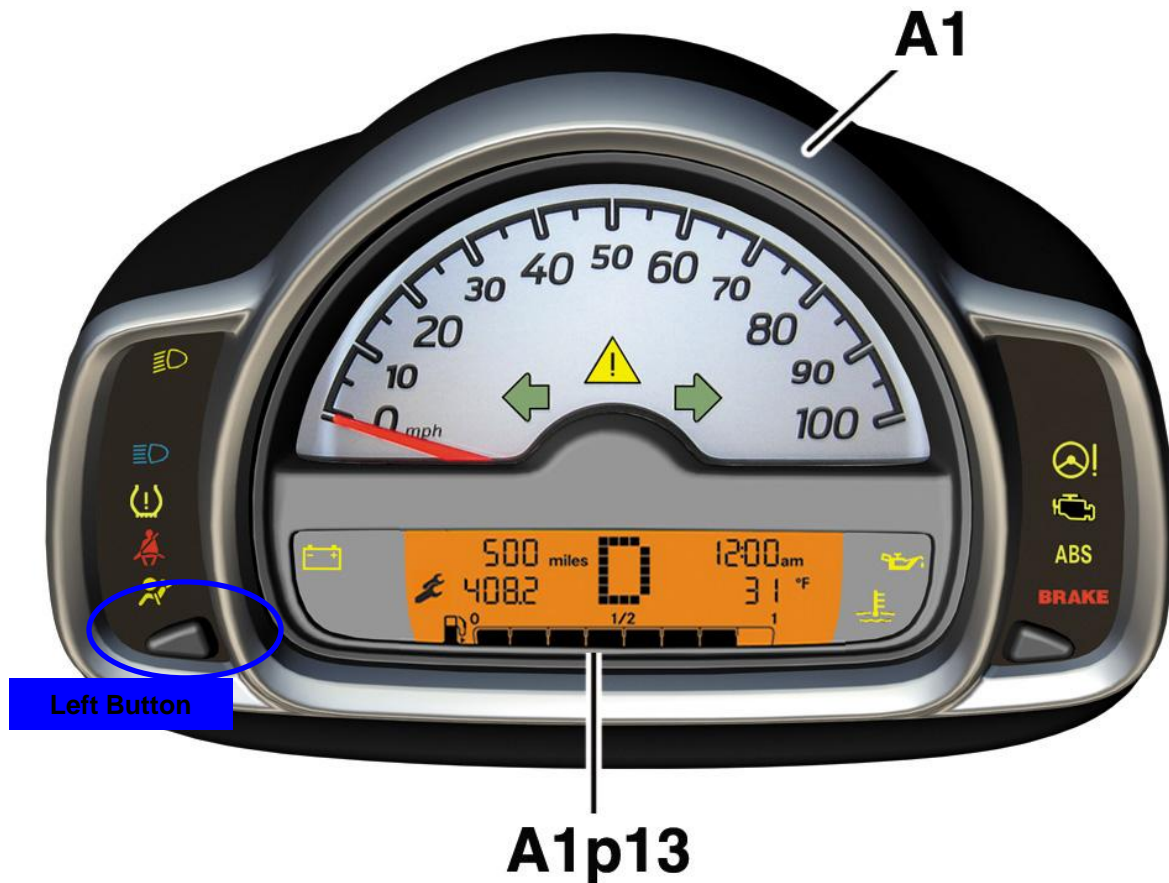


>> Resetting the Maintenance Counter on your smart fortwo



A1 – Instrument Cluster
A1p13 – Multifunction Display

> To Reset Your Maintenance Counter:

1. Switch on the ignition.
2. Within 4 seconds, press the left button on the instrument cluster twice (this will bring up the maintenance counter in the multifunction display).
3. Switch off the ignition.
4. Press the left button again and hold it down.
5. While holding the left button, switch on the ignition and wait approximately 10 seconds.
6. Release the left button once the maintenance counter has been reset.

The maintenance counter will read **10000** when it has been reset.